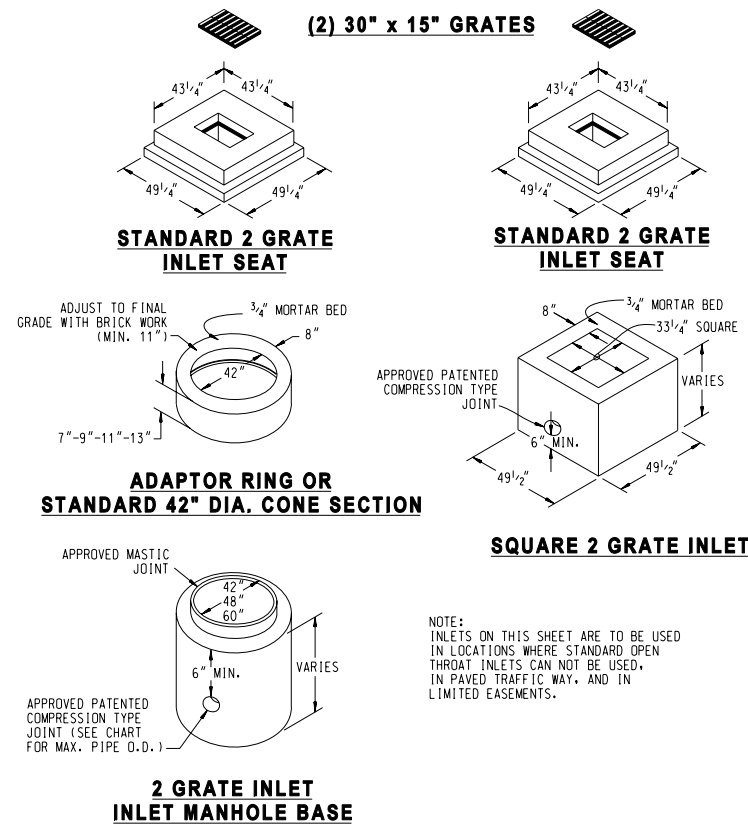
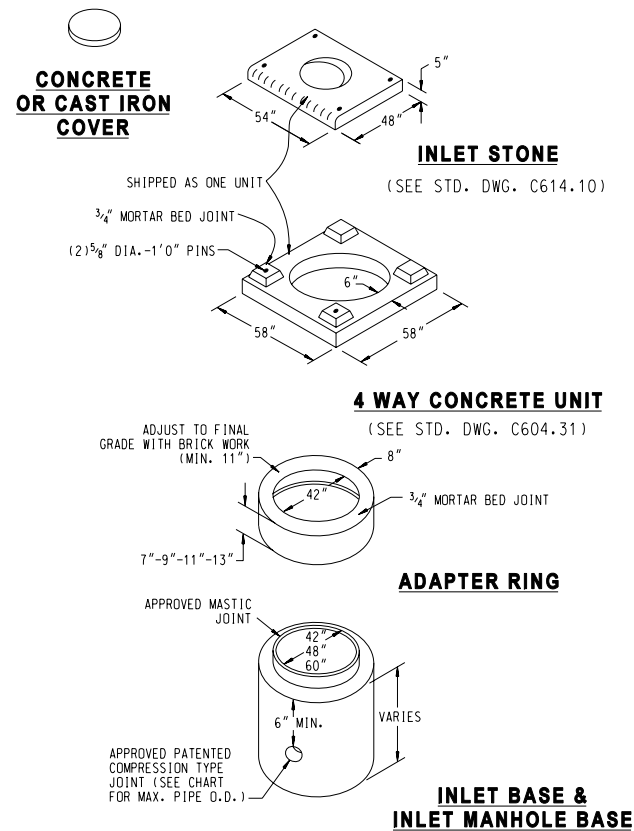


NEW	REVISIONS		
11-18-93	1-5-98	2-22-01	7-31-07

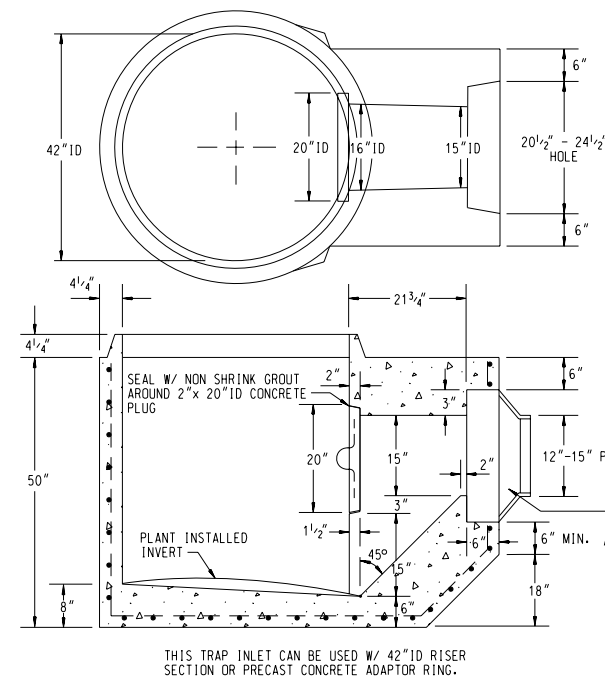
ST. LOUIS COUNTY PROJ.	
SHEET NUMBER	TOTAL SHEETS



**PRE-CAST CONCRETE UNIT  
2 GRATE INLETS**

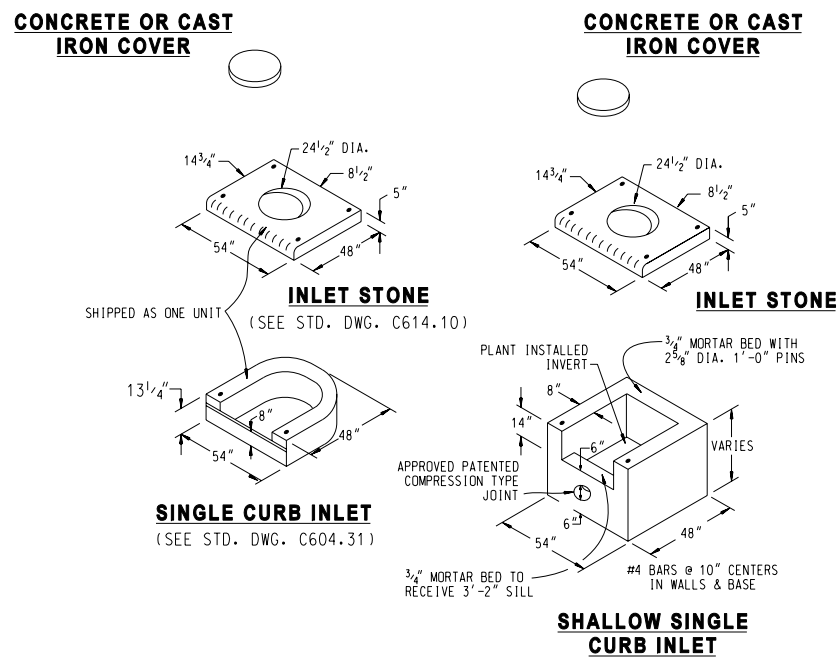


**PRE-CAST CONCRETE UNIT  
AREA INLET**

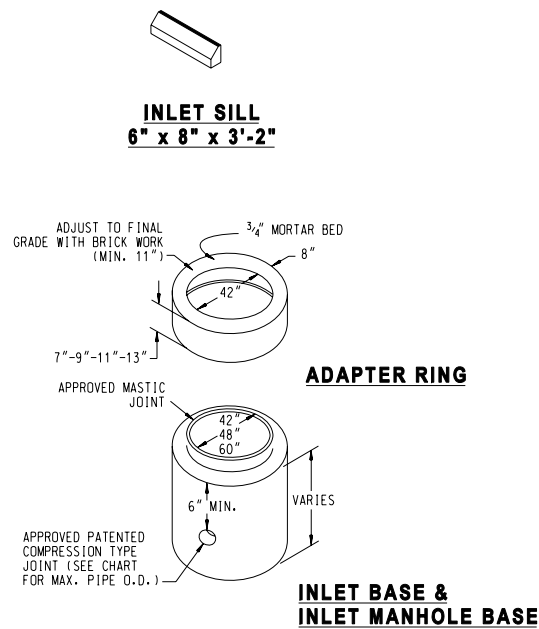


**PRE-CAST CONCRETE UNIT  
TRAPPED STREET INLET BASE**

**PRE-CAST CONCRETE UNIT  
DOUBLE UNTRAPPED STREET INLET**



**PRE-CAST CONCRETE UNIT - SINGLE STREET INLETS**



**PRECAST CONCRETE STORMWATER STRUCTURES**

**MINIMUM DISTANCE FLOWLINE TO TOP OF STONE OR GRATE**

PIPE ID NOMINAL INCHES	AREA INLET CIRCULAR BASE DIA.			2 GRATE INLET CIRCULAR BASE DIA. SQUARE (MAX.)			SINGLE STREET INLET CIRCULAR BASE DIA. RECTANGLE (MAX.)		
	42"	48"	60"	42"	48"	60"	42"	48"	60"
12"	45"			38"			31"	48"	41"
15"	48"			41"			34"	51"	44"
18"	52"			44"			37"	55"	48"
21"	55"			47"			40"	58"	51"
24"		58"			51"		44"	61"	54"
27"			78"		71"	NA			81"
30"			82"		74"	NA			85"
33"			85"		77"	NA			88"

NOTE: 1. 48" DIA. BASE REQUIRES 7" HIGH TRANSITION SECTION TO 42" DIA., SIMILAR TO "ADAPTER RING".  
2. 60" DIA. BASE REQUIRES 24" HIGH CONCENTRIC REDUCER TRANSITION TO 42" DIA., SIMILAR TO "ADAPTER RING".

**GENERAL NOTES**

- Do not scale drawing. Follow dimensions.
- The details shown are adapted from the "Revised Standard Construction details for Sewer and Drainage Facilities" of The Metropolitan St. Louis Sewer District dated 2000.
- The standard specification section noted refer to the "Standard Construction Specifications for Sewers and Drainage Facilities" of The Metropolitan St. Louis Sewer District dated 2000.
- Class A concrete refers to The Metropolitan St. Louis Sewer District requirements.

SAINT LOUIS COUNTY  
DEPARTMENT OF HIGHWAYS AND TRAFFIC  
CLAYTON, MISSOURI

SEWER CONSTRUCTION DETAILS  
**PRECAST CONCRETE  
STORMWATER  
STRUCTURES**

REVISION DATE: July 31, 2007

DRAWING  
C604.44