

**Saint Louis
County
Department of
Health:**

**...promotes optimal
health for people who
live, work, or visit the
County by**

**...monitoring and
assessing the public
health status of the
County**

**...and developing
programs and/or
policies that prevent
illness or injury.**

Saint Louis
COUNTY
HEALTH

2003

ANNUAL REPORT



Contents:

Vision and Mission Statements	2
Director's Message	2
Executive Administration	3
Health Services	4 - 9
Environmental Health Services	10 - 23
Research	24 - 27
Medical Examiner, Personnel	28
Personnel	29
Fiscal Services	30 - 31
Directory	Back

A message from the Director

This year has been an amazing and trying year in many regards. As we tightened our belts fiscally and our resolve professionally, the Department of Health continued to provide quality services to the citizens and visitors of Saint Louis County. As this report delineates, we often not only maintained but increased services in many areas.

Aspects that are filling our clients and employees with joy and pride are the newly completed North Central Community Health Center; our new pharmacy provider which means our patients have access to prescriptions 24 hours / 7 days a week; and the anticipation of a very much needed Health Information System.

Although the end of 2003 found us in mourning over the passing of County Executive Buzz Westfall, we continue to strive to meet the needs of this County and the ideals he held.

Jacquelynn A. Meeks

Director, Department of Health

The DOH Vision:

We will be a progressive public health department providing a full array of services which includes assessment, policy development and assurances for health information, disease and injury prevention, and environmental health.

Mission Statement:

Saint Louis County Department of Health promotes optimal health for people who live, work, or visit the County.

This is accomplished by monitoring and assessing the public health status of the County, and developing programs and/or policies that prevent illness or injury.

Executive Administration

The role of this division is to assure that residents and visitors in Saint Louis County have a safe and healthy place to work and live, to maintain liaison with our community partners, and to encourage and support the other divisions within the department.

The Department Director continued as a director of the Regional Health Commission; in 2003, we maintained our financial support to the Commission and carefully reviewed the data collection, analysis and reports produced by it. In addition, the Director sits as a member of the National Association of County and City Health Officials' Advisory Committee for Community Health, Immunization, Tobacco and Chronic Disease Control. She is a member of the Board of Directors and Advisory Committee Council for the Missouri Institute for Community Health. She is chairperson for the Emergency Preparedness Advisory Committee and member on the Partnership on Smoking or Health for the Missouri Local Public Health Association.

Through the Public Health Coordinator, the department has maintained and enhanced liaison with approximately 50 community agencies, coalitions and grassroots organizations which foster improved healthy lifestyles for County residents. The Department continued its membership in the Health Committee of the Area Resources for Community and Human Services organization, the goal of which is to assure that all people have access to quality health care. As well, the Department provided 8 letters of support to agencies and academic institutions as they created major grant applications for funding to improve public health programs.

The Department's internet website continues to be a major source for County residents to receive information, both through published web pages on all public health topics as well as replies to questions submitted directly to specific program managers or administrators. Conservative estimates indicate that approximately 450,000 pages were viewed and 400 questions were posed for response.

As the focal point for media contact, Executive Administration released some 55 press notices and advisories on topics varying from West Nile Virus / Mosquito Control to Rabies Information to Nutrition Education. In addition, the Media Coordinator assisted in the creation and publication of Legal Notices for Public Hearings and submitted articles to the *County Connection* and *County Direct*. The Contracts and Grants administrator assisted in the preparation and submission of four major grant applications in addition to monitoring the legislative process for 88 routine grants, contracts or agreements. Executive Administration also monitored and guided approximately 65 Departmental Invitations for Bid / Requests for Prices as referred from and returned to the County Division of Procurement.

Division of Health Services

The primary responsibility of Health Services is to assure the residents of Saint Louis have access to primary and preventive health care. To assure access to health care and pharmaceuticals, the division is comprised of three Health Centers, two Family Mental Health units, a Public Health Nursing Program, WIC/Nutrition, Corrections Medicine, Dental Services, Medical Records and Continuous Quality Improvement.

The Assistant Director's position was filled in October 2003 by combining the activities in the Public Health and Ancillary Service Division into the Health Services Division and assigning other areas to the Research Division. DOH's Home Health Program was transitioned either to private agencies or the Public Health Nursing Program to provide continuing services to our patients. A large amount of the Assistant Director's time from October to the end of the year was coordinating influenza activities due to the early arrival of the virus and vaccine in short supply from extreme demand. Also he was responsible for securing funds and providing an automated flu telephone hotline, which provide information to over 8,000 inquiries.

Other activities included working with the Missouri Institute for Community Health (MICH) on local public health department's accreditation, the high school senior Hepatitis B/Meningococcal vaccine program and the Hepatitis A & B high risk patient vaccination initiative.

At the end of the year, we moved to the new North Central Community Health Center at 4000 Jennings Station Road. The new facility replaced the old Pine Lawn Health Center at 6150 Natural Bridge Road. We moved from 8,000 square feet to 36,000 square feet. There are four areas to provide medical care, several community rooms to hold community functions and a way to house all the Public Health Nurses under one roof. The staff is very delighted with their new home and our patients are pleased to receive care in a state of the art building.



Health Centers

The three health centers (John C. Murphy, South County and North Central Community Health Center) provide primary and preventive care services. Physicians are contracted through the Institute for Research and Education in Family Medicine, Washington University Infectious Disease Unit, Health Line Management and St. Louis University – OB/GYN Department. We offer adult medicine, women’s health (includes family planning, Gyn care and OB services), pediatrics/adolescent, podiatry, sports medicine, ophthalmology, Refugee/TB clinic (John C. Murphy only), STD clinic and pregnancy testing.

Social Workers for adults and pediatrics/teens are housed at each site and provide counseling (crisis/short-termed) and assistance to external/internal resources to improve living and physical well-being outcomes. The St. Louis College of Pharmacy Pharm.D. Program, in conjunction with the Department of Health, provides counseling and education on polypharmacy usage, smoking cessation and diabetic education.

Indicator	People Served
Health Centers	
Adult Medicine Visits	20,103
Pediatric Visits	11,760
Women’s Health	9,242
Teen Health Visits	2,520
Sports Medicine Visits	795
Ophthalmology Visits	1,109
Chest Clinic Visits	645
STD Visits	11,488
Pregnancy Testing	767
Immunizations	43,965
Travel Immunizations	3,728
Dental	
Total dental visits	16,153

Division of Health Services, continued

Dental Health

Dental services are provided at the three health centers and at the Justice Center. The primary goal for dental is to assure healthy gums and to preserve teeth. Only primary dental services are offered – such as cleaning of teeth by the dental hygienist, filling of cavities and simple extractions. Complex dental work is referred to the community dentists and oral surgeons that will work with our population. Dental is very active in the community, providing educational classes to preschoolers and nursing home residents on the importance of proper brushing and gum care to maintain healthy teeth.

Family Mental Health

Family Mental Health offers services to the entire family, to school districts and to the community. In the past, the emphasis has mainly been on children and adolescents. With the changes in family dynamics it became imperative to include the adults in the household. Counseling and therapy sessions are held at our two locations at the North and South County Government Centers. These sessions can be either with a licensed clinical Social Worker, a psychologist or with a psychiatrist based on individual need. We have many staff that are on committees and boards within the community helping to shape policies and procedures relating to the mental health of individuals. Our goal is to help everyone to live a successful life.

Corrections Medicine

Corrections Medicine provides basic health care needs to the residents of the Justice Center, Juvenile Detention and Lakeside Center. Housed within the Justice Center is the medical and psychiatric infirmary that provides hospital-like care within the constraints of a jail setting. Chronic disease clinics are held daily in the clinical area and women's health care is offered ½ day per week. To provide for specialty care there is an orthopedic surgeon that is always available and sees patients for four hours every other week and a dermatologist that provides care. The Family Mental Health unit is comprised of Social Workers through Justice Center, two psychologists and a contractual psychiatrist. Basic dental services are provided to the residents and to the juveniles.

The first stop for all detainees as they enter the Justice Center is the Intake area in which a nurse completes a thorough medical history and brief assessment to assure he/she is fit for confinement. Medications are passed four times a day by the nursing staff and sick call is held every shift to assess the medical needs of the residents.

Juvenile Detention has a full time nurse assigned to assist with the care of the juveniles. Clinics are held three times a week by the nurse practitioner and all psychological care is provided through Family Courts with the assistance of the psychiatrist at Corrections. Lakeside Center provides healthcare to those residents by the nurse practitioner 12 hours per week.

Indicator	People Served
Family Mental Health	
Number seen in the outpatient unit	1,832
Number of screening phone calls	731
Community Activities	1,605
Corrections Medicine	
Nurse Sick Call	120,000
Physicians Sick Call	18,000
New Patient Interviews	15,000
Medications and Treatments	110,000
Clinic Referrals	6,100
Intake Assessments	38,000
Juvenile Sick Call	2,500
WIC and Nutrition Services	
Children: (Health Center patients)	1,357
Adults: (Health Center patients)	2,966
Patient Education:	21,640
Nutrition Class attendance:	12,516
WIC Food Checks issued:	95,296
Community encounters:	1,315

Division of Health Services, continued

WIC and Nutrition Services

WIC received additional funds from the Missouri Department of Health and Senior Service to implement a new grant titled “Client-Centered Approach to Education for Prevention of Overweight in Children.” Approximately 90 WIC participants have been recruited to participate in this project, which continues into 2004. Direct client data entry was implemented in 2003, which helps facilitate clinic flow. To increase WIC appointment show rates for client appointments, a reminder recall system was implemented during 2003.

WIC nutrition staff implemented the new computerized food frequency program provided by the State to increase the client’s awareness of the nutritional value of the food they eat. St. Louis County WIC food check redemption dollars were over \$5,600,000.

Medical Records

Medical Records completed all Health Information Portability Accountability Act (HIPAA) compliance requirements for patient information and privacy by the April 14, 2003 deadline. New policies and procedures were developed and implemented to accomplish HIPAA compliance. Medical Records developed a HIPAA examination tool and all DOH staff/students were quizzed to determine their competency level relative to HIPAA guidelines and DOH protocol. Renovation was completed at North Central, John C. Murphy, South County Community Health Center and Family Mental Health South to insure the privacy and security of patient protected health information. Medical Records assisted with the development and implementation of the new Electronic Medical Record (EMR) system for DOH.

Public Health Nursing

Public health nurses provided a “safety net” for County residents who have no other source of care. They continued to support caseloads of 40-50 families who would otherwise be without care. During 2003, increased focus was placed on the adult and senior population by expanding nursing practice to include the skilled nursing care needed by DOH clients with no insurance coverage. Public health nursing amplified their partnership with CDC to provide nursing staff when needed for

immunization clinics, communicable disease outbreaks/tracking, and rabies vaccines on weekend to comply with the mandatory administration schedule. They also began working to broaden their role in bioterrorism and emergency response planning by committing to specific school districts to work with school staff in preparing for the possibility of vaccine distribution. They are also partnering with environmental health staff to identify lead poisoning cases. Public Health Nursing increased weekend commitments to provide skilled nursing care for homebound patients and case management services to clients.

Continuous Quality Improvement (CQI)

CQI activities during 2003 included maintaining databases for Prenatal Case Management, Synagis and Encounter Errors. Work was also completed on the Title X data collection method including a process to capture accurate income and family size at each encounter to categorize family planning patients (regardless of pay source) at correct poverty status. CQI also coordinated the Synagis process for DOH. Title X data collection methodology were examined and work was begun with DOH's IT department to adjust poverty categories for 2003 Title X data.

CQI also formatted policies for the Health Services Policies and Procedures Manual relating to Reproductive Services, Title X and Missouri Family Health Council. MCH Grant support included audits, grant writing and on-site monitoring visits. CQI diligently worked to resolve long-standing billing (fiscal) issues related to PHN Program service delivery. CQI played an active role in development of Reproductive Health Services and HIPAA (related to PHN Program) policies.

Indicator	People Served
Public Health Nursing	
Patient referrals:	2,176
Home visits:	11,021
Shelter visits:	605
Individual consultations/education:	804
Community presentations:	8,151

Environmental Health Services

The Environmental Protection Division is responsible for the planning, direction and coordination of activities for comprehensive environmental public health programs. The division has seven main branches: Food and Environmental, Vector/Veterinary Services, Air Pollution, Solid Waste, Healthy Homes and Lead Poisoning Prevention, Neighborhood Preservation and a fully accredited Environmental Laboratory.

Air Pollution Control Program

The Air Pollution Control program exists in the County to balance the health of the community with the protection of the environment. The St. Louis metropolitan area achieved attainment of the 8-hour ozone standard for the first time in 2003. Ozone and the 8-hr standard are two components, which are indicative of the air quality in the region. Good air quality is important for the respiratory health of our residents and visitors. Attaining this standard helped our community breathe easier in 2003. The goal for the coming 2004 air pollution and Ozone season is to meet and maintain the stricter 1-hr ozone standard. Keep watching the DOH website for what you can do to assist in meeting that goal.

Some of the goals for the 2003 fiscal year were (a) Insure cleaner air in the metropolitan region, (b) maintain operation of air monitoring stations and equipment, (c) protect human health and the environment by regulating asbestos projects in the County, and (d) participate in community activities while maintaining active environmental memberships.

Gasoline dispensing facilities were inspected twice annually instead of the normal once a year inspection and staff researched new locations for an air monitoring station as part of an expanded monitoring network, while continuing to operate the three $PM_{2.5}$ monitoring sites. The DOH $PM_{2.5}$ weighing laboratory was used exclusively for analyzing certified filter weights as part of a nationwide USEPA sampling protocol for fine particulate matter and new $PM_{2.5}$ continuous air monitoring equipment was researched.

Staff initiated investigation of asbestos-in-vermiculite and established an inspection protocol and laboratory analytical technique for identifying and analyzing this new public health threat. Additionally, participation in the Regional Chamber and Growth Association (RCGA) Air Committee, East-West Gateway Council of Governments (EWGCG) Air Quality Advisory Committee, Missouri Department of Natural Resources (MoDNR) Air Advisory Forum, several rule revision workgroups, school district's monitoring station tours and participating as assistant instructors and facilitators with MoDNR were some of the outreach activities for 2003.

Air Pollution Control Workload Indicators

Indicators	2002	2003	Change
Construction Permits Issued	140	142	+ 2
Operating Permits Issued	206	212	+ 6
Stack Sampling	1	2	+ 1
Complaints Received and Answered	71	81	+ 10
Continuous Samplers	45	46	+ 1
Non-continuous Samplers	8	8	N/C
Plant Emission Inventories Processed	370	345	- 25
Asbestos Removal Projects	893	973	+ 80
Major and Minor Source Inspections	146	137	- 9
Stage II Inspections (Gasoline Stations)	1,230	1,196	- 34
Ambient Particulate Air Samples Collected	754	851	+ 97
Open-burning Permits Issued	79	73	- 6

Dairy Control Program

The Dairy Control staff collects dairy samples from farms and producers over the eastern third of the State of Missouri and several collection sites in Illinois. This effort is supported by a contract with the Missouri State Milk Board. This testing assures the citizens of Saint Louis County that their milk and dairy products meet all federal, state and local health and safety requirements. The dairy control program also centers around maintaining a cost effective program while assuring a safe, wholesome, quality milk and dairy product to consumers. Staff also strives to increase annual farm rating scores by 2% on individual farm sanitation compliance ratings conducted by the Missouri Department of Health and Senior Services and FDA rating officers.

During this fiscal year, more than 2,003 consultations were conducted with dairymen through an ongoing education program developed to enhance the dairy producer's knowledge of quality milk production. The education program includes consultations on high bacterial counts and cleaning procedures. During this period, degraded facilities were reduced by 24% with over 11,000 samples collected and more than 6,700 inspections and field visits being conducted.

The Dairy Section has maintained an average score of 96% on all State and FDA farm surveys for 2003. The number of farm degrades (suspensions) decreased by 24% from 2002 levels.

Environmental Health Services, continued

Dairy Control Workload Indicators

INDICATORS	2001	2002	2003	% CHANGE
Farm Inspections	3,894	4,359	3,968	-10%
Total Number Farms	950	917	866	-6%
Complaint Investigations	14	11	1	-1,000%
Degrades	198	118	90	-31%
Consultations	2,150	2,386	2,003	-19%
Raw Samples	12,614	10,818	9,852	-10%
Finished Product Samples	866	1,256	1,160	-8%
Permit Transport Tanks	700	1,343	1,616	+17%

Childhood Lead Poisoning Prevention Healthy Homes Program

The Healthy Homes/ Lead Poisoning Prevention Program is committed to a continuous assessment of the personal and environmental health of our community, specifically lead, mold and indoor air quality threats.

During the 2003 year, staff worked to assure children under six years of age were screened and tested for lead poisoning, educated physicians on the need to test their patients under six years of age, partnered with public and private schools to encourage participation in lead screening activities and parent notification concerning the County's lead screening ordinance and targeted children under 3 years of age for testing. Staff continued with the newly developed awareness program concerning lead abatement procedures, which saw an increase in the number of homeowners, and landlords educated on proper lead abatement procedures.

Educational presentations were conducted at private residences, WIC facilities, daycare facilities, city halls, and libraries. Staff attended health fairs to disseminate informational brochures and to educate parents. Contact with municipalities was initiated which elicited their cooperation in distributing information regarding lead poisoning. Follow up letters sent to parents of kindergarten students whose screening indicated advisability of blood lead testing and provided phone consultations to school nurses. Due to these efforts screenings by private physicians increased by 11%.

Best practice lead remediation techniques were applied on an individual basis with owners/tenants involved in the abatement process. All parties involved in environmental investigations are made aware of any lead

hazards present and given educational information/instructions necessary to bring about safe and successful remediations or abatements. As a result of requests and referrals, 974 risk assessments were conducted.

Information concerning the number of consultations for mold, indoor air quality and asthma will be detailed in the 2004 report.

Childhood Lead Poisoning Prevention/Healthy Homes Workload Indicators

Children tested by Department of Health	2,212
Children tested by private providers	11,184
Elevated blood levels Countywide	546
Home visit presentations	140
WIC presentations	28
Daycare/School presentations	11
General presentations	58
Health fairs attended	12
Educational brochures distributed	15,600
Lead buster kits distributed	283
Risk assessments conducted	974
Clearance tests performed	110
Lead remediations	96

Vector Control

The emphasis of the Vector Control Program in 2003 was again focused on the control of mosquitoes that spread West Nile Virus. The 12 percent increase in the mosquito responses/actions was most directly related to the increased number of mosquito surveillance sites, both for adult mosquitoes and mosquito larva. Decisions on when and where to apply control materials were based upon surveillance data.

Environmental Health Services, continued

Vector Control Workload Indicators

Measures	2002	2003
Rat/Rodent Responses and Actions	1,770	1,673
Mosquito Responses/Actions	77,925	87,059
Inquiry responses, presentations and educational meetings	1,200	913

Veterinary Services

The number of animals handled by the Veterinary Services Program continued to decline in 2003. There was a 7% decrease in the number of dogs handled, which was partially offset by a 9 % increase in the number of cats handled. There was a 122% increase in the numbers of cats and an 8% increase in the number of dogs adopted from the shelter in 2003. This increase was due in large part to the program partnering with private and non-governmental outside agencies. The Animal Control program also saw a 9% decrease in the number of animals required to be euthanized.

Veterinary Services Workload Indicators

Measure	2001	2002	2003
Total animals handled	10,450	9,866	9,509
Dogs Picked Up	6,604	6,202	5,753
Cats Picked Up.....	3,103	3,023,	3,282
Cats and Dogs Released to Owners	1,946	2,19,	2,015
Cats and Dogs to Humane Society	82	128	27
Animals Adopted	1,491	1,475,	2,142
Citations Issued	614	675	683
Animal bites reported	1,689	1,601	1,697
Rabid Animals	9	8	14
Rabies Registrations kits	144,833	148,822	139,113

Environmental Health Laboratories

The Environmental Health Laboratories provide a number of support functions for the various environmental programs within the division. The Milk and Water Laboratory analyzes raw milk and dairy products for conformance to the State's Pasteurized Milk Ordinance. Over the past several years, the number of analyses has steadily declined as a result of consolidation of smaller dairies into larger cooperatives. This trend together with cuts by the State in discretionary testing has caused a 6% reduction in dairy samples (9% analyses) in 2003. The Laboratory also provides regulatory microbiological testing for drinking water and bottled water supplies, and over-the-counter testing of private well owners and recreational water.

Table 1: Milk and Water Laboratory Analyses: 2002 and 2003

Type of Analyses	2002		2003	
	Samples	Tests	Samples	Tests
Milk & Related Products	11,796	63,828	11,177	58,087
Drinking Water	989	4,295	867	3,882
Miscellaneous	0	154	0	353
Yearly Total	12,785	68,277	12,044	62,322

The Air Pollution and Industrial Hygiene (APIH) Laboratory provides testing for the Childhood Lead Poisoning Prevention Program under CLIA accreditation for blood levels, and for measuring lead levels in paint, water, and other potential environmental sources of lead poisoning. This lab component also provides the Aflatoxin and pesticide testing of milk and dairy products. In addition this lab provides pollen and mold counts to the news media and to the public through its Pollen and Mold Center web page.

The APIH Lab also supports the Air Pollution section by testing for asbestos in building materials. In support of the EP Air Pollution Control Section, the APIH Lab analyzes air quality for a variety of pollutants.

Environmental Health Services, continued

Environmental Health Laboratories - Indicators

Table 2: Milk and Water Laboratory Analyses: 2002 and 2003

Type of Analyses	2002	2003
Trace Metals:		
Environmental Lead	86	69
Water	14	40
Other	5	4
Pollen/Mold Count	253	247
Distilled Water Purity	1,486	1,456
Aflatoxin in Milk	45	15
Pesticides in Milk	867	510
Miscellaneous	8	4
Quality Control	318	287
Blood Lead	3,174	2,231
Quality Control	1,469	1,182
Yearly Total	4,643	3,413

Table 3: Air Pollution and Industrial Hygiene Analysis

Type of Analyses	2002	2003
Air Pollution		
Hi-Volume (Suspended Particulate)	144	138
Chemical Analyses of Sulfate	91	0
Metals	133	151
Inhalable Particulate (PM-10 & PM-2.5)	3,319	3,290
Miscellaneous	4	5
Quality Control	780	768
Industrial Hygiene		
Chemical Analyses: Metals	60	0
Volatile Solvents	172	0
Asbestos	516	140
Miscellaneous	603	214
Quality Control	132	118
Yearly Total	1,483	472

The Environmental Radiation Laboratory performed 1,840 analyses in 2003. The major source of work and revenues comes from a contract with Missouri Department of Natural Resources to analyze all of Missouri's drinking water supplies for environmental radiation.

In addition, this lab performs monthly surveillance of Saint Louis County drinking and river waters for radioactivity. They also provide testing for newly drilled wells for compliance to Missouri's radiological standards.

Environmental Radiation Laboratory 2002 – 2003

Client	2003 Analyses	
St. Louis County	192	
St. Charles	72	
Other Public Water Supplies	2,324	
Miscellaneous	187	
Internal Quality Assurance	453	
Proficiency Studies	170	
Total Analyses	5,401	

Year	2002	2003
Type of Analyses		
Gross Alpha	1,059	850
Radium-226	344	238
Uranium (total)	12	23
Radon-in-Indoor Air	253	46
Gross Beta	145	142
Radium-228	502	259
Other	0	0
Gamma (All gamma radionuclides combined)	186	186
Miscellaneous Test	2,156	1,484
Proficiency Analysis	165	170
Yearly Totals	4,822	3,398

Environmental Health Services, continued

Food and Environmental

The Food and Environmental Branch performs enforcement inspections, compliance audits, plan review, and training for a variety of environmental health programs in Saint Louis County. These programs include: food service temporary food establishments, public swimming pools and spas, on-site sewage disposal systems, tobacco and tattoo inspections. As a contract agency with Missouri, annual inspections of childcare and lodging facilities located in the County are also conducted.

Some of the programmatic goals and objectives for 2003 were: Enhance organizational capacity by strengthening the capacity to address staffing issues through training opportunities, provide staff with opportunity to improve applied knowledge, skills, and abilities, promote the safety of public water recreation facilities, reduce the risk of drownings by drafting enhanced legislation regulating pools and spas, increasing the number of inspections at public water recreational facilities, reduce the risk of unsanitary conditions and practices that may lead to the spread of food borne illness in food establishments, and reduce the accessibility of tobacco products among our youth through active enforcement of the Tobacco Ordinance. Detailed statistics regarding these objectives are listed below:

WORKLOAD INDICATORS

Food and Environmental Services: Program Summary

Activity	2002	2003	Difference	% Change
Foodservice Inspections	13,648	14,433	785	5.4%
Foodservice Establishments Opened	425	383	-42	-11%
Foodservice Establishments Closed	364	179	-185	-103.3%
Food Borne Illness Complaints	179	125	-54	-8%
Complaint Investigations	703	612	-91	-14.9%
Sewage Complaints	445	401	-44	-11%
Sewage Activities	445	365	-80	-22%
Pool & Spa Inspections	12,137	11,112	-1,025	-9.2%
Pool & Spa Closed	239	278	39	14%
Hotel & Motel Inspections	117	151	34	23%
Daycare Inspections	764	616	-148	-24%
Tobacco Compliance Audits *	672	324	-348	-107%
Tobacco Enforcement Audits *	853	1,938	1,085	56%
Hepatitis A Compliance Foodservice	8,627	12,978	4,351	34%
Hepatitis A Compliance Day Care	449	453	4	.9%

* Compliance audits are conducted annually on half of the permitted establishments, while enforcement inspections are conducted twice a year.

Solid Waste Program

The Solid Waste Program plays a key role in the planning and development of an integrated waste management system designed to manage residential, commercial and industrial waste in St. Louis County. Major activities include inspecting and enforcement of solid waste regulations, responding to complaints regarding solid waste issues, educating residents and business owners on proper solid waste management and recycling issues, and providing resources to municipalities, markets, and industry to further their recycling activities.

Five area landfills accepted a combined volume of approximately 1,834,448 tons (that's over 3.6 billion pounds) of solid waste from August 2002 to August 2003.

The Health Department has engaged the services of R.W. Beck, a consulting firm, to assist in writing a comprehensive Solid Waste plan for the County. Completion is expected September 2004. Some of the plan components to be addressed are:

- Current and future location, design, and construction of waste management facilities
- Countywide and regional inventory assessment
- Proposals to increase countywide waste diversion rates
- Best practice research
- Management of Household Hazardous Waste
- Review of the Solid Waste Code (Chapter 607)
- Recommendations for the efficient collection of waste in unincorporated Saint Louis County

Some of the achievements for 2003 are listed below:

Recycling/Waste Reduction Efforts:

1. **Unincorporated Newsletter** – “3R Review” newsletter produced and distributed to 138,000 households in unincorporated Saint Louis County, every quarter.
2. **Recycling programs in schools** – continued with the support of the Abitibi paper-recycling program, increasing participation and support to schools. During 2003, 24 public school districts and private schools with a total of 325 schools participated in the program. The schools collected more than 12,000 tons of paper and raised over \$132,000 for their school's own use.
3. **Household Hazardous Waste Collection Events** – continued a successful program during 2003. Six events were conducted, three in the spring and three in the fall. Participation included over 8,200 households collecting over 907,000 pounds of chemicals. That's nearly a 58% increase in the quantity (by weight) of materials collected during 2002. Approximately 60% of the materials collected (or 544,000 pounds) were recycled, reused, or blended for energy recovery.
4. **Grant Program:** 10 grants were processed and implemented in 2003.

Environmental Health Services, continued

5. **Resourceful School Program** – Continued a successful education campaign within Saint Louis County schools. Seventy-two presentations were conducted, reaching 3,182 students and 1,860 classroom recycle bins were distributed as part of the school recycling program. Through December 31st of the 2003/2004 school year, 14 presentations were conducted, reaching 324 students and 993 classroom recycle bins were distributed.
6. **Saint Louis County Goes Green** – The Health Department received an MDNR grant to increase awareness and utilization of used/recycled-content building materials at the North Central Community Center. In 2003, the Department diverted 1,334 tons of demolition debris. Construction recycling included steel, cardboard and beverage containers for a total of 24.64 tons. The building also used recycled-content materials including steel, drywall, floor and ceiling tiles, carpet, particle board cabinets, insulation, exterior sheathing, copper tubing, aluminum and other materials.
7. **Saint Louis County Health Department Green Team** – The Health Department has established a team of people from all the divisions to develop and maintain Department-wide reduction, reuse, and recycling strategies. During 2003, the Green Team accomplished the following:
 - **Department-wide Recycling Efforts** - The Health Department Green Team evaluated paper recycling needs in the clinics and satellite offices. Over 60 desk-side recycling containers with information stickers about appropriate types of paper for recycling were distributed to employees as part of the office paper program.
 - **Department-wide Buy Recycled Content Efforts** - Existing purchasing contracts were investigated for recycled-content choices and then showcased at the Green Team's "Buy Recycled Showcase" held for America Recycles Day in the lobby of the 121 building on November 14, 2003. Over 200 America Recycles Day pledge cards were collected and submitted for the national drawing and a Health Department drawing was held featuring items highlighted at the event.
8. **County Fair and Air Show** - Approximately 5,220 pounds of recyclables (commingled number 1 and number 2 plastic bottles, and aluminum cans) were collected during the Labor Day weekend event. Cardboard was planned to be recycled but wet conditions and contamination necessitated disposal instead.
9. **Holiday Recycling** – Partnered with Chesterfield Citizens Committee for the Environment and Sach Properties to setup a recycling drop-off location in Chesterfield. This event collected 1.34 tons of mixed paper (including gift wrap) and 1.26 tons of cardboard.
10. **County/Public Events** – Participated in outreach efforts targeting County Government employees:
 - Family Court Healthy Teens Health Fair in March and July at the Family Courts and Missouri Hills facility. Approximately 200 students and staff educated on the topic of landfills and recycling.
 - A "Residential Recycling Directory" was posted on the Health Department web site. In response to a flier placed in the January 2003 tax mailing, over 2,100 paper copies of the Recycling Directory were mailed to residents and 50,651 copies of the Recycling Directory were downloaded.

Compliance/Enforcement Efforts:

1. **Complaints** – Conducted 1,859 solid waste (trash) related complaint inspections and followed up inspections. Of that, 814 were corrected on site and 169 violation notices were issued.
2. **Demolition Applications** – Staff processed 1,273 demolition applications, ensuring the person responsible for the demolition was also using licensed haulers for the demolition wastes.
3. **Special Waste Applications** – Staff processed 175 special waste applications to ensure the special waste is transported by a special waste hauler and is disposed of in an approved landfill.
4. **Medical Facility Registrations** – Staff registered 966 medical facilities.
5. **Waste Vehicle and Container Registration** – During 2003, staff licensed 2,054 waste hauling vehicles and permitted 1,037 waste containers.
6. **Facility Licensing** – The Solid Waste Management program is responsible for the review of initial applications for solid waste management facilities and modification requests of existing solid waste management facilities in Saint Louis County. During 2003, staff reviewed 72 applications and requests; two were license applications for Transfer Stations in Oakville resulting in over 1,000 dedicated hours to these two facility applications.
7. **Annual Facility Re-licensing** – Staff re-licensed 14 solid waste management facilities.

Neighborhood Preservation

The Neighborhood Preservation program is a proactive component to neighborhood stabilization. As the housing stock within the County ages, this program works to inspect and enforce the Property Maintenance code in unincorporated County areas. A number of items aimed at preserving and stabilizing neighborhoods are the focus of inspectors, i.e. peeling paint, high grass and weeds, derelict vehicles, litter and other exterior maintenance items.

The number of inspection areas increased in 2003. The total number of tickets/citations written increased by 17% from previous years. Consequently, the total number of re-inspections rose by 64%. The numbers of interior inspections in 2002 were 377 as compared to 1,151 in 2003, an increase of over 200% as compared with derelict vehicle violations increasing by 28%.

Although the number of citations issued increased from previous years, there were 231 fewer cases referred to court this year, a drop of 9.5%. This drop resulted in an increase in voluntary abatement due to the educational outreach from staff. Due to staff operating in a pro-active manner this year, staff received 18% fewer complaints.

Environmental Health Services, continued

Information was provided to derelict vehicle owners for free towing by not-for-profit groups seeking vehicle donations. Due to this effort, a large number of cars were removed from the neighborhoods, offering a dramatic visual improvement to anyone visiting these areas.

One of the new initiatives undertaken during the course of the year was a pilot Paint Program to assist low-to-moderate income homeowners who had received a citation for peeling paint. By working in partnership with the not-for-profit Area Resources for Community Human Services organization, the Health Department received funding for free paint for homeowners from the Lemay Midwest Bank Center. This funding was able to assist 20 households in a targeted area of Lemay. The pilot program was very successful and will serve as a model for the grant application that has been submitted to the Missouri Housing Development Commission for funding for the coming 2004 season.

Neighborhood Preservation increased outreach activities for senior residents this year. DOH senior citizen outreach staff was contacted on many occasions when our inspection staff interacted with a household in need of professional assistance. By utilizing DOH program staff and State of Missouri Mental Health staff, we were able to address challenges in the neighborhoods that were better resolved with a long-term, permanent solution instead of continuing to cite a resident for property maintenance violations.

Table 1:

INSPECTION TYPE	INSPECTIONS
Notices of violation written	13,700
Investigations resulting in no identified code violation	1,192
Follow up reinspection for compliance	15,148
Reinspection required by municipal court actions initiated	732
Miscellaneous inspections	871
Interior Inspections	1,151
TOTAL	32,794

Table 2:

	SOUTH	NORTH	TOTAL
Complaints	1,915	1,853	3,768
Reinspections	7,118	7,906	15,024
Status Inspections	810	58	868
Weed Cuts	136	509	645
Tickets Issued	5,565	8,053	13,618
Sent to Court	892	1,296	2,188
Order to Vacate	37	50	87
Derelict Vehicles	1,336	2,453	3,789
All Activities Totals	17,809	22,178	

Top Ten Problem Properties

The following table demonstrates there has been success in focusing upon the worst problem properties and chronic violators. These properties are kept on a on a Top Ten list and have an Inspector in both the North and South assigned in an effort to concentrate on prosecution and abatement of these cases.

TOP TEN CASES ABATED IN 2002	86
TOP TEN CASES ABATED IN 2003	107

Neighborhood Preservation has diminished its role in the neighborhood cleanups this past year by connecting not-for-profit organizations with community groups wanting to conduct a clean-up in an area. Staff assists in this process by conducting targeted inspections in the area a few weeks in advance, citing all debris and illegal storage that may be abated with the help of the organized cleanup effort.

The Department employs two County police officers to assist with neighborhood concerns of a legal nature. These officers in conjunction with the Chief Inspector were instrumental in facilitating cleanups of individual properties.

ARRESTS MADE IN 2003	60
ARRESTS PURSUED	481

Division of Research

Overview

The Division of Research is a diverse group encompassing Communicable Disease, Emergency Preparedness, Health Education, Health Information Systems, Information Technology and Quality Improvement. It is the mission of this Division to strengthen service, education, and research to understand and advance public health practice that can prevent disease and promote health for Saint Louis County. This is facilitated through the application of the core public health functions: assessment (surveillance, needs assessment, gathering and interpreting data, case findings, monitoring and forecasting trends, evaluating outcomes), policy development (mobilizing resources, prioritizing, evidence-based decision making, leadership), and assurance (implementing necessary services, providing access to care, reducing disparity, preventing diseases).

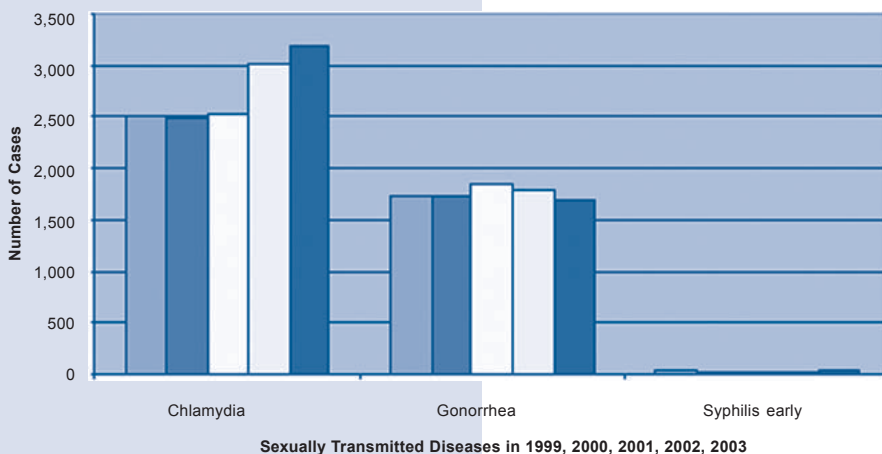


Communicable Disease

The Communicable Disease Control Services Section is responsible for monitoring the incidence and minimizing the impact of communicable disease in Saint Louis County. Specifically, communicable diseases that may impact public health must be reported to the Department of Health by hospitals, laboratories, physicians and other healthcare providers as required by Missouri Statute. Department staff then investigates, documents and acts to control the spread of these illnesses.

Sexually transmitted diseases continue to represent a significant area of challenge. In 2003, reported cases of Chlamydia increased by 6% while reported Gonorrhea declined by 5% from 2002 levels. Early syphilis increased from 20 cases in 2002 to 25 cases in 2003 and represents an ongoing area of concern.

STD cases by year in Saint Louis County



Tuberculosis control activities focus on assuring that residents with active tuberculosis receive a complete course of effective antibiotic therapy. Case management services were provided for each of the 22 County residents with tuberculosis in 2003. Residents who were exposed to tuberculosis but had not developed active disease were offered preventive therapy.

Emergency Preparedness



The Emergency Preparedness Team is responsible for enhancing the preparedness of Saint Louis County's public health system in relation to public health emergency planning and preparedness. This program is funded through a contract with the Missouri Department of Health and Senior Services.

A fundamental role of the Emergency Preparedness Team is surveillance. Surveillance is the systematic collection and subsequent analysis of health related data to monitor changes in disease and provide a mechanism to initiate prevention and control measures. In 2003, Epidemiology Specialists contacted all nine hospitals in Saint Louis County, five school districts and three ambulance districts daily to collect and analyze surveillance data. Surveillance activities in 2003 identified four suspicious situations involving white powder, one case of Tularemia and one case of monkey pox that were all thoroughly investigated.

The first phase of smallpox vaccinations occurred in 2003. The Emergency Preparedness Team was responsible for providing Smallpox vaccinations to local public health agencies and hospital staff in 11 counties in eastern Missouri. Seven smallpox vaccination clinics were held to educate, determine eligibility for receiving the vaccine and administer the vaccine. A total of 256 people were assessed for eligibility and vaccinated. Follow up care was coordinated or provided by the Emergency Preparedness team for all of the participants.

Health Education

The Health Education program is responsible for developing programs and interventions to promote healthy behaviors in the community. This was the second year of focusing on incorporating health behavior theory and concepts into our program planning and developing evaluation components to all programs. One program that was extremely successful with incorporating theory into a health education program was the Flu Shot program. Through this program a 20% increase of African American health center patients over 50 years of age received their flu shot compared to the previous year.

Last year health educators presented at over 200 health fairs, provided 216 trainings at 46 different child care centers and fulfilled 5 state contracts.

Research, continued

Due to budget constraints, the Health Education program sought external funding for community projects through the submission of nine grant applications, with four being awarded. In addition, five programs (Teenage Health Consultant Program, Abstinence By Choice, Moving Right Along, 5-A-Day for Better Health and the Flu Shot program) were invited to either local or national conferences to disseminate information regarding their program. Additional 2003 program involvement for Health Education are listed below:

Name	Audience	Program
World No Tobacco Day (May 31 st)	Parents of Newborns	Packets from the EPA on taking a "Smoke Free Home Pledge" and t-shirts were given to parents of newborns going home from St Louis area hospitals
Clean Indoor Air	Board of Aldermen	Testify before Aldermen to pass Resolution 225 to test air quality outside smoking lounges. Passed. Educators coordinated testing.
Clean Indoor Air	Manufacturing plants	Worked with Tobacco Free Missouri Coalition to assist three major car manufacturing plants to go smoke-free
Annual Tobacco Contest	Kids in Saint Louis County (SLC) Schools	Solicited 8.5X11 posters, depicting pictures and messages promoting a tobacco-free life. Over 1,000 received and made into calendars.
National Safe Kids Day	Parents and kids	Car seat checks, helmet fitting, fire/home safety at area shopping malls
Smoking Cessation Programs	Adults and children	Programs delivered to Public School students, and to worksites – where several quit in both cases
Teenage Health Consultant Program	Students in SLC schools (21 districts)	For the 2002-2003 school year, 892 sessions were conducted, reaching 17,811 students.
Abstinence By Choice	Students in SLC schools (5 districts)	For the 2002-2003 school year, the ABC program reached 7,434 students with several sessions each
Health Seminars	County Government employees	Facilitated monthly seminars on a variety of topics (primarily health-related), open to all employees
Employee Needs Assessment	County Government employees	Assisted the Wellness Council in developing, implementing, analyzing result of wellness survey

Information Technology

The Information Technology program is responsible for applying information technology to health solutions to improve outcomes. One project in 2003 included the geocoding (special geographic identifier) of all resident live births in Saint Louis County by school district. The number of resident live births in St. Louis County has been declining steadily. In 2000 there were 12,842 resident live births. Respectively, in 2001 and 2002, there were 12,372 and 12,095 resident live births. This data can be viewed at the following site: http://www.stlouisco.com/doh/data_ctr/data_ctr.html

Another major project was migrating data from an IBM MVS mainframe to a new HIPAA compliant health information system. This system will enable county health centers to deliver more cost effective health services to its residents. The period of time to adjudicate claims has been cut to days, instead of weeks or months.

Health Information Systems

Health Information Systems supports Department of Health users in completing their jobs as outlined in the Health Mission statement through the use of hardware and software budgeting, purchasing, installing, placing/replacing, repairing and training. Many innovative technology programs were completed in 2003 including upgrading the network backbone with new switches and patch panels at local and remote sites that replaced the older, less secure hubs in the network closets, upgrading communication lines, organizing and installing all technology equipment at the brand new North County Community Health Center and installing SMS on all PCs and laptops that allow critical upgrades and patches without needing to physically be placed at each individual PC.

Quality Improvement

The Quality Improvement program is responsible for analyzing existing policies and procedures and making recommendations on improving services. A few key projects in 2003 included the collection and analysis of pharmacy data to assist in the decision making process of outsourcing Pharmacy services, creating a formulary and creating a formulary exception database, the collection and analysis of clinic data for clinic statistics, productivity comparisons, disease trends, and patient satisfaction and the completion of the 2003 CASA Audit of Immunizations of Two-Year-Olds. There was a 94.7% immunization rate in Saint Louis County for children under two years of age among clinic patients.

Office of the Medical Examiner

The Chief Medical Examiner is a board certified forensic pathologist who is appointed by the Director of the Department of Health to investigate sudden, unexpected, suspicious, unnatural or violent deaths. The Medical Examiner serves the community by utilizing the knowledge of forensic science and medicine to investigate deaths that concern the public health and safety. Surviving family, friends, and the public have the assurance that a thorough and accurate investigation has been conducted.

Accurate determination of cause and manner of death in the deaths of concern to the public are essential for a variety of reasons including the proper administration of justice, by identifying murders and exonerating the innocent; recognizing and maintaining evidence for use in criminal and civil proceedings; recognizing epidemic threats to the public health; recognizing defective materials, structures or products; detecting dangerous occupational environments; and establishing causes of death in cases of therapeutic intervention. A complete medicolegal investigation provides for the expeditious settlement of insurance claims and estates.

The Medical Examiner's Office is committed to providing forensic education to public agencies, healthcare facilities, law enforcement, and other forensic professionals. This division is closely aligned with St. Louis University's Division of Forensic Pathology, governmental agencies that analyze and disseminate information critical to public health and safety, and organizations that support and promote advances in forensic sciences. The Office of the Medical Examiner plays a key role in planning for and responding to natural disasters and potential terrorism.

Personnel of the Medical Examiner's Office consist of Assistant Medical Examiners who assist the Chief and have similar qualifications as the Chief, medicolegal death investigators, autopsy assistants, toxicology personnel, administrative and support staff.

Office of the Medical Examiner

Cases Investigated by Causes of Death

Natural	5,001
Accident	323
Suicide	84
Homicide	27
Undetermined	15
Stillborn/fetal death	2
Total cases investigated	5,452

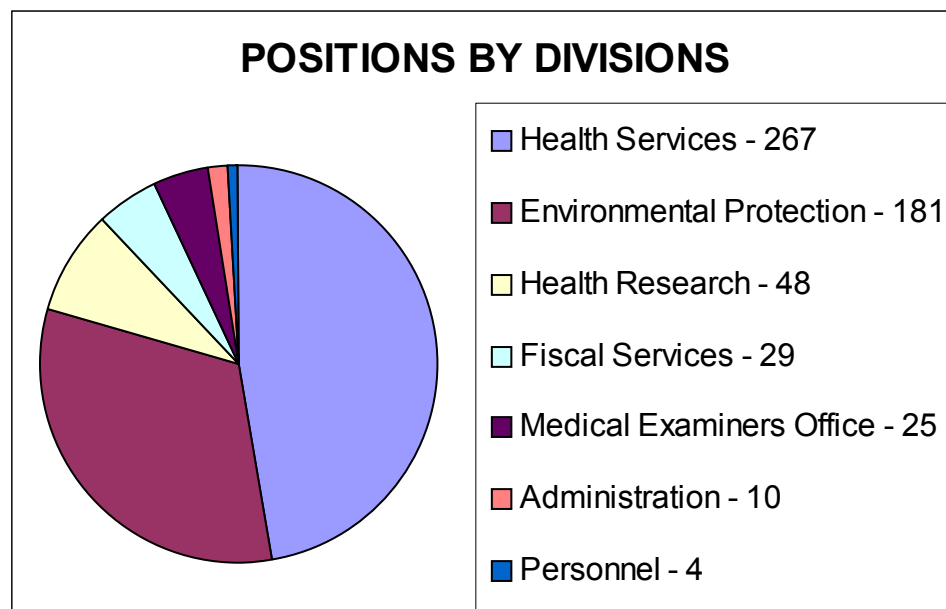
Personnel Services

The Department of Health Personnel Office continues to support, assess and monitor staffing requirements for all divisions within the Department of Health. During the 2003 budget year staffing was reduced by 14.4% or 95 positions (most of which were vacant positions). This reduced the total staffing at the end of 2003 to 564 established positions.

We continue to strive to challenge employees in meeting the goals and objectives, provide staffing that supports our mission and goals, promote volunteerism within the community and inspire further education of our staff.

During 2003 twenty-five employees participated in the Saint Louis County Tuition Reimbursement Program. Reimbursement to employees for education purposes totaled \$23,648.

Volunteers have contributed 2,992.7 hours of their time to a variety of Department of Health divisions, including but not limited to Animal Control, Communicable Disease, Personnel and Fiscal Services. They also assist several times a year with Saint Louis County Blood Drives. We truly appreciate the time and effort of our volunteers.



Fiscal Services

The Fiscal Services Division is a comprehensive and cost-conscious fiscal operation that supports all divisions within the Saint Louis County Department of Health.

Components under Fiscal's umbrella are:

- Accounts Billable
- Accounts Receivable
- Contracts
- Printing
- Purchasing and
- Vital Records

Our goal is to continually streamline department functions by creating a more educated and competent workforce through cross training and centralization. Internal controls have been perfected and Department of Health billing and invoicing functions are being incrementally transferred to the fiscal department in order to create continuity and better revenue tracking and reporting.

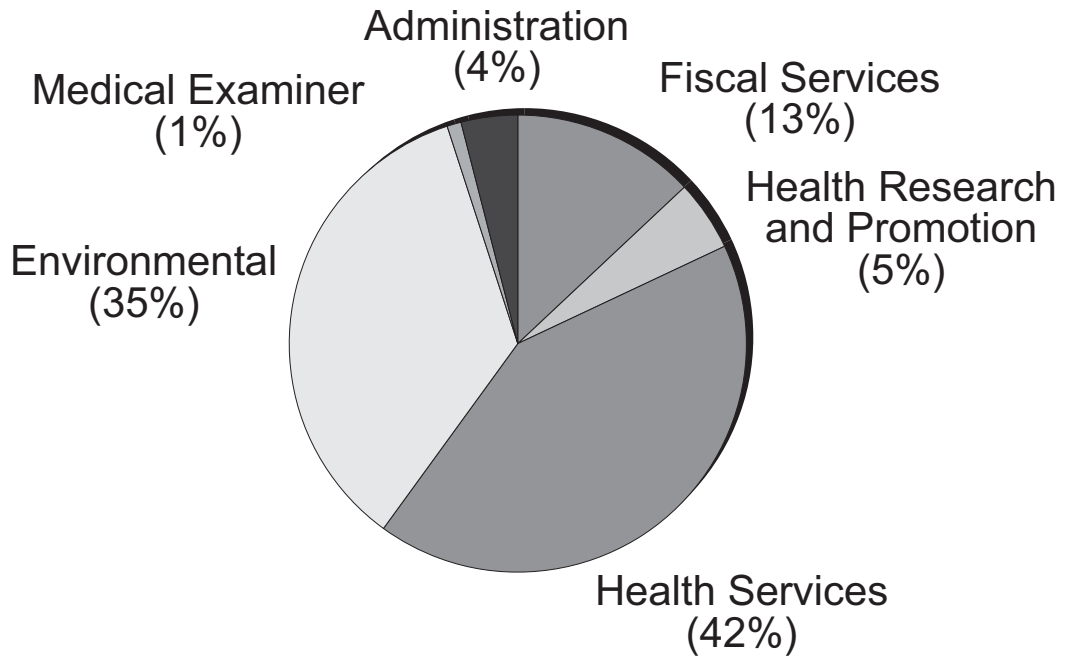
The new Ntierprise Health Information System will be arriving at the Department of Health in January of 2004. As we prepare for the "go live" date, we will be replacing our legacy patient management system with a more modern and efficient patient management system.

This system will hopefully address and conquer the billing challenges the Department of Health faced with the old system by requiring more diligence from the individuals who use the system. For example, it will be crucial for the front line people at the health centers to be more knowledgeable of what were previously considered to be fiscal responsibilities.

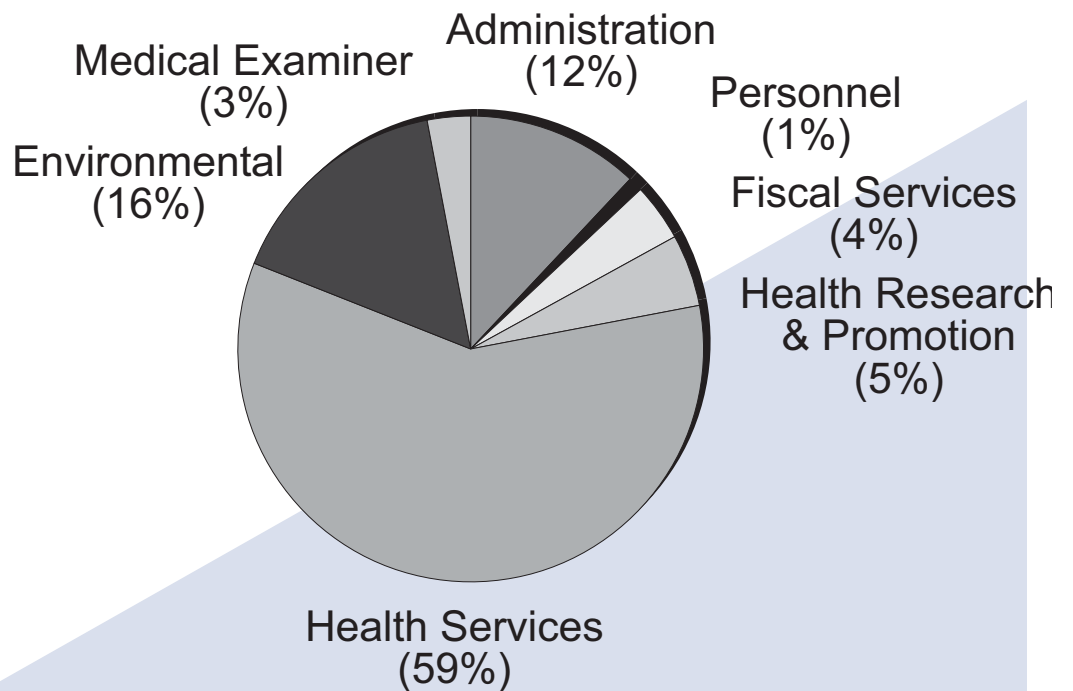
The new system's functional capabilities are endless and will significantly improve the rate at which revenue will be received within the Department of Health. Fiscal Services will be playing a major role in the management and functionality of the new system. We can't wait to see what new possibilities are looming in the horizons.

2003 Revenues

Cash receipts made up 28% of DOH revenues in 2003. The remainder 72% was made up of tax and interest receipts.



2003 Expenses



Saint Louis County Department of Health 2003

Administration Offices

111 South Meramec
Clayton, MO 63105

Administration: (314) 615-1600

Communicable Disease Ctrl: 615-1630

Environmental Protection: 615-1698

Health Data: 615-1688

Health Education: 615-1670

Family Mental Health: 615-1760

Vital Records: 615-0376

(birth and death records)

WIC Services: 615-0685

TTY for hearing-impaired: 615-8428

Fax: 615-6435

South County Health Center

4580 South Lindbergh Blvd.
Saint Louis County, MO 63127
(314) 842-1300

John C. Murphy Family Health Center

6065 Helen Avenue
(near Hanley & Airport Road)
Berkeley, MO 63134

(314) 522-6410

North Central Community Health Center

4000 Jennings Station Road
Pine Lawn, MO 63121
(314) 679-7800

Medical Examiner's Office

George Gantner Building
6039 Helen Avenue
Saint Louis, Missouri 63134
(314) 522-3262

Family Mental Health Centers

North Area Center

North County Government Center
21 Village Square
Hazelwood, MO 63042

(314) 615-7471 TTY: 615-7457

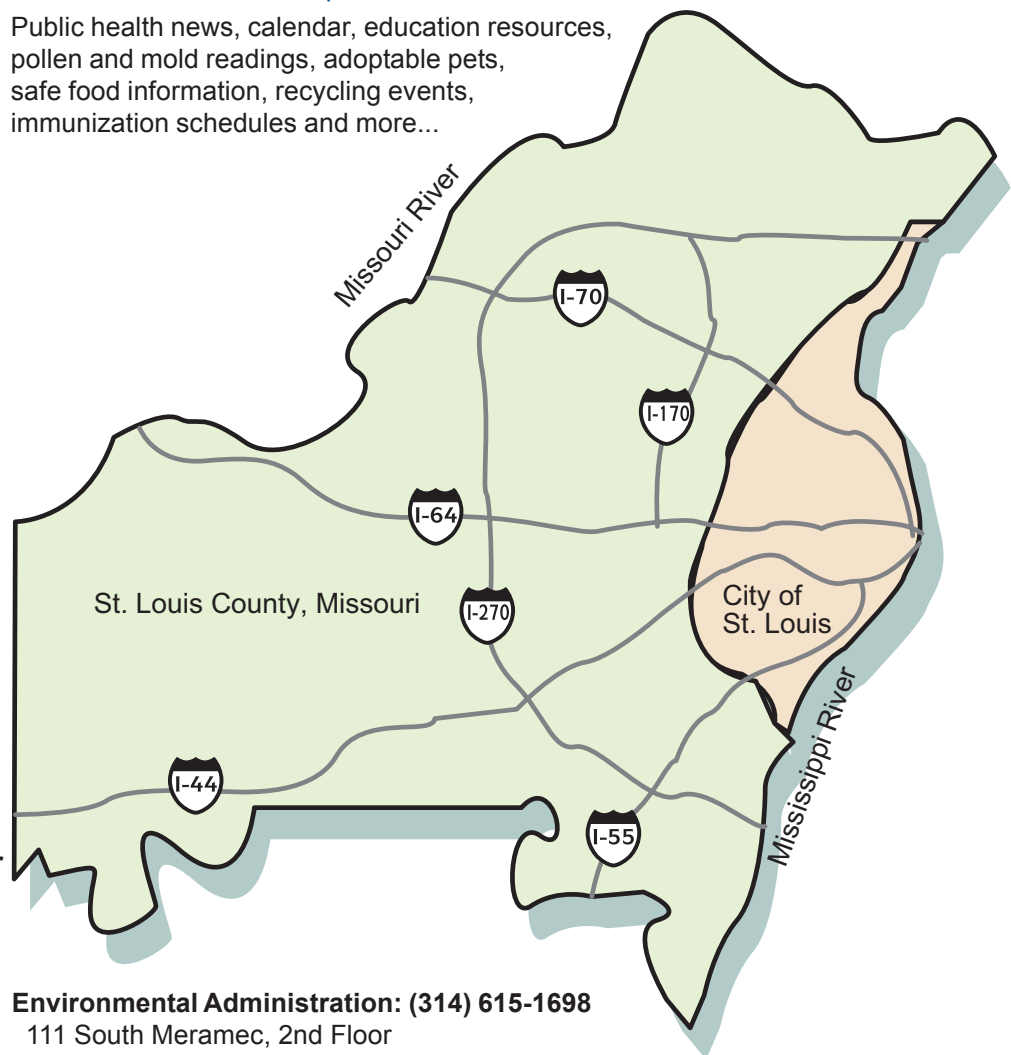
South Area Center

South County Government Center
4548 Lemay Ferry (Keller Plaza)
Saint Louis County, MO 63129

(314) 615-4072 TTY: 615-4001

Visit us on the web at: <http://www.stlouisco.com/doh/>

Public health news, calendar, education resources,
pollen and mold readings, adoptable pets,
safe food information, recycling events,
immunization schedules and more...



Environmental Administration: (314) 615-1698

111 South Meramec, 2nd Floor
Clayton, MO 63105

Air Pollution Control: 615-8924

Public Health Sanitation: 615-8900

Waste Management: 615-8958

Lead Poisoning Prevention/Industrial Hygiene: 615-5323

Neighborhood Preservation

North of Highway 40/64: 615-7333

South of Highway 40/64: 615-4151

Environmental Health Laboratories: 615-8324

Community offices

North County Government Center

21 Village Square
Hazelwood, MO 63042

(314) 615-7469 TTY: 615-7457

South County Government Center

Keller Plaza, 4556 Lemay Ferry Road
Saint Louis County, MO 63129

(314) 615-4027 TTY: 615-4001

West County Government Center

78 Clarkson Wilson Centre
Chesterfield, MO 63017

(314) 615-0929 TTY: 615-0998

North Animal Shelter

4100 Seven Hills Drive
Saint Louis County, MO 63033

(314) 831-6500

South Animal Shelter

77 Hunter Road
Ladue, MO 63124

(314) 726-6655